



# PRODUCT CATALOGUE

ADHESIVE EXPERT





# COMPANY INTRODUCTION

Zhejiang Jiuerjiu Chemical Co., Ltd. is a professional producer of instant glue, located in Ningbo Chemical Industrial Park. Our company was built in 2004, covering more than 6.6 acres. The famous series “Jiuerjiu” “Juju” “Ever” “Okebond” are widely used in electronic, wood, plastic, metal, rubber and other field, selling over 50 countries in the world.

In the past 20 years, we won many honorable awards: “Green Factory”, “Environmental Protection Leader”, “National High-Technology Company”, “Ningbo Advanced Company”. At the same time, we passed the IATF16949 quality system in 2022 and get the certification. During these years, we always believe that quality is our first priority, therefore our quality is the most competitive in the adhesive market.





Currently JUJU owns more than 31 patents including invention patent, utility model patent and copy right.



# COMPANY PATENTS

120+

TRADEMARK

25+

PATENT FOR UTILITY MODELS

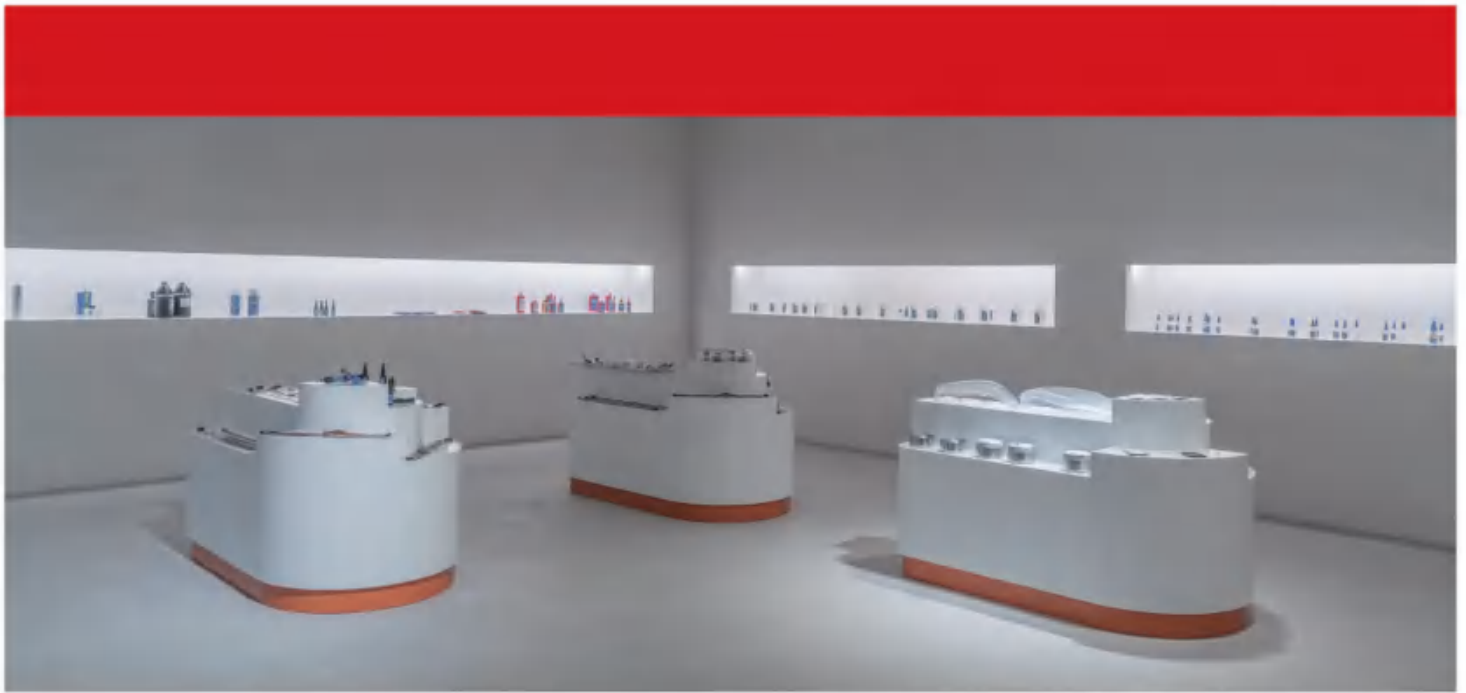
5+

PATENT

# ENTERPRISE CERTIFICATION

Juju passed internationally recognized audits and certifications.





## TEST CENTER

- Create IATF 16949 certified test center
- Continuous upgrade of our formula and operation system
- Providing reliable data and reserved sample



## QUALITY CONTROL

Juju test center have a one-stop test system for quality insurance, including Quality and Performance Test, Strength Test, High and Low Temperature Functional Test, Salt Spray Test, UV Aging Test, Drop Test and Viscosity Test. Our professional team contain a chemistry professor who worked on cyanoacrylate field for over 10 years, and 15senior QC engineers. Juju provides a whole functional service that satisfied all our clients. Every single drop of glue has a data record in Juju lab. Juju keeps our data records for 2 years to help our client check with us. During 20 years we don't have any quality issue reported.

# QUALITY TEST



Viscosity Test



Drop Test



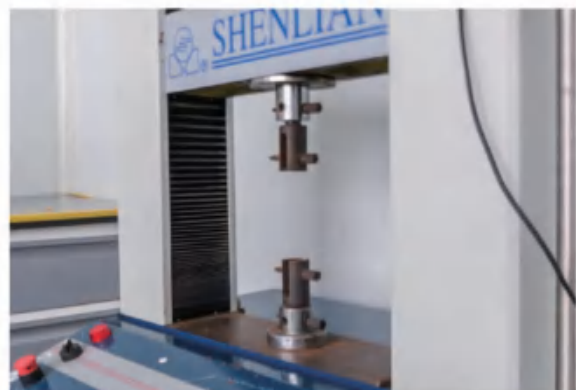
UV Aging Test



Salt Spray Test



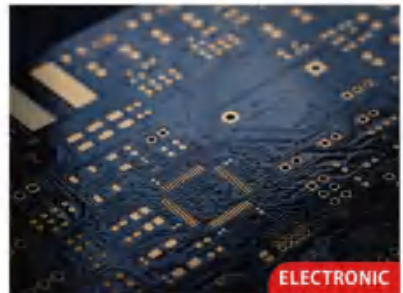
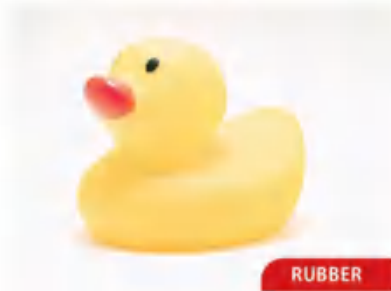
High and Low Temperature  
Functional Test



Strength Test

# ADHESIVE APPLICATION

As a company dedicated to researching and producing high-quality adhesive and sealing products, JUJU offers a diverse range of products, including instant glue, gelatin glue, epoxy glue, and RTV silicone glue. These products are widely used in various industries, such as transportation, automotive, electronics, industrial, communication, and household DIY. For example, our products are used for engine seals in the automotive industry, and for bonding and sealing 3C products in the electronics industry. We not only offer premium products but also provide professional technical consultation and after-sales service, committed to becoming a reliable partner for our customers.





# CONTENTS

JUJU Super Glue	08-11
General Super Glue	12-16
Accelerative Super Glue	17-19
Tube Glue	20-24
Gel Glue	25-27
Special Glue	28-30
Raw Cyanoacrylate	31
Threadlocker	32-38
MS Sealant	39-41
RTV Silicone Sealant	42-45
AB Epoxy	46-49
Tire Glue	50-52
Surface Treating Agent	53-56



# JUJU SUPER GLUE



- The product is suitable for porous substrates such as wood, paper, leather, cork, and fabric.
- Fast speed, long shelf life, easy to use, and user-friendly.
- Universal instant adhesive, particularly suitable for acidic surfaces, also applicable to metals, rubber, plastics, and other substrates.



# JUJU SUPER GLUE PRODUCT GUIDE



	Product Attributes						Metals			Plastics			Other Materials				
	Strength	Viscosity	Cure Time	Dry Color	Temp Range	Shelf Life	Aluminum	Iron	Steel	PVC	ABS	PC	Wood	Rubber	Leather	Glass	Ceramic
9400 reinforcing holder	16 mpa	80-120 cps	≤ 8 s	Clear	-50~125(°C)	≤15 months	+	+	+	+	++	++	++	++	+	++	++
N-401	16 mpa	80-120 cps	≤ 8 s	Clear	-50~125(°C)	≤15 months	+	+	+	+	++	++	++	++	+	++	++
	16 mpa	80-120 cps	≤ 8 s	Clear	-50~125(°C)	≤15 months	+	+	+	+	++	++	++	++	+	++	++
9909	16 mpa	80-120 cps	≤ 8 s	Clear	-50~125(°C)	≤15 months	+	+	+	+	++	++	++	++	+	++	++



9400 Reinforcing holder



N-401 (box)



N-401 (card)



9909

# JUJU SUPER GLUE



## 9400 Reinforcing Holder

**Strength:** 16 mpa

**Viscosity:** 80-120 cps

**CBM:** 0.039 M<sup>3</sup>/CTN

**Package:** 1pc/box 100box/ctn

Shelf Life	Net Weight
15 Months	20 G

### Unique features:

- The handle design incorporates unique ergonomic principles, enabling precise and controlled adhesive application.
- Built-in sealing steel needle: Longer product shelf life, consistent performance.
- The most cutting-edge technological formulation, providing the strongest and most durable bonding effect.

### Good for:

- Foam, wood, brick, glass
- Paper, leather, ceramic, plastic
- Concrete, metal, rubber, fabric

### Used in:

Universal adhesive, suitable for a wide range of adhesive materials.



## N-401 (box) 20g

**Strength:** 16 mpa

**Viscosity:** 80-120 cps

**CBM:** 0.044 M<sup>3</sup>/CTN

**Package:** 24pcs/box, 12boxes/ctn

Shelf Life	Net Weight
15 Months	20 G

### Unique features:

- The product is suitable for porous substrates.
- Fast speed, long shelf life.
- Easy to use, user-friendly.

### Good for:

- Paper, leather
- Wood, cork, fabric
- Metal, rubber, plastic

### Used in:

Universal Instant adhesive, particularly suitable for acidic surfaces. The product is suitable for porous substrates and can also be used on metals, rubber, plastics, and other substrates.



## N-401 (card) 20g

**Strength:** 16 mpa

**Viscosity:** 80-120 cps

**CBM:** 0.044 M<sup>3</sup>/CTN

**Package:** 12pc/box, 12boxes/ctn

Shelf Life	Net Weight
15 Months	20 G

### Unique features:

- The product is suitable for porous substrates.
- Fast speed, long shelf life.
- Easy to use, user-friendly.

### Good for:

- Paper, leather
- Wood, cork, fabric
- Metal, rubber, plastic

### Used in:

Universal instant adhesive, particularly suitable for acidic surfaces. The product is suitable for porous substrates and can also be used on metals, rubber, plastics, and other substrates.

# JUJU SUPER GLUE



9909

20g

**Strength:** 16 mpa

**Viscosity:** 80-120 cps

**Package:** 12pc/box, 12boxes/ctn

Shelf Life	Net Weight
------------	------------

15 Months

20 G

#### Unique features:

- minimalist design style
- compact and portable packaging
- Built-in steel needle at the bottle opening, less prone to clogging

#### Good for:

- Paper, leather
- Wood, cork, fabric
- Metal, rubber, plastic

#### Used in:

The product is suitable for acidic surfaces and porous substrates, and can also be used on metals, rubber, plastics, and other substrates.

# GENERAL SUPER GLUE

- Widely applicable for bonding between different types of materials, it exhibits excellent adhesive performance on the majority of substrates, particularly plastic and rubber.
- The product achieves high bonding strength even on very small adhesive surfaces.
- The product is also suitable for bonding metal and porous materials.
- The product exhibits excellent impact resistance, enhancing the uniformity of adhesive component deformation.



# GENERAL SUPER GLUE PRODUCT GUIDE



	Product Attributes						Metals			Plastics			Other Materials				
	Strength	Viscosity	Cure Time	Dry Color	Temp Range	Shelf Life	Aluminum	Iron	Steel	PVC	ABS	PC	Wood	Rubber	Leather	Glass	Ceramic
PA-5	10 mpa	40-60 cps	≤ 8 s	Clear	-20~125(°C)	≤15 moths	+	+	+	+	++	++	++	++	+	++	++
P-20	10 mpa	40-60 cps	≤ 8 s	Clear	-20~125(°C)	≤15 moths	+	+	+	+	++	++	++	++	+	++	++
P-50	10 mpa	40-60 cps	≤ 8 s	Clear	-20~125(°C)	≤15 moths	+	+	+	+	++	++	++	++	+	++	++
495	10 mpa	40-60 cps	≤ 8 s	Clear	-20~125(°C)	≤15 moths	+	+	+	+	++	++	++	++	+	++	++
496	10 mpa	1500 cps	≤ 8 s	Clear	-20~125(°C)	≤15 moths	++	++	++	+	++	++	++	++	+	++	++
NL-10 brush bottle	10 mpa	40-60 cps	≤ 8 s	Clear	-20~125(°C)	≤15 moths	+	+	+	+	++	++	++	++	+	++	++
T-13	6.5 mpa	2-5 cps	≤8 s	Clear	-20~125(°C)	≤15 moths	+	+	+	+	++	++	++	++	+	++	++



PA-5

P-20

P-50

495 (20g box)

495(20g card)

496

NL-10 brush bottle

T-13

# GENERAL SUPER GLUE

PA-5 3g\*12



**Strength:** 10 mpa  
**Viscosity:** 40-60 cps  
**CBM:** 0.034 M<sup>3</sup>/CTN  
**Package:** 12pcs/card, 30cards/ctn

Shelf Life	Net Weight
15 Months	3 G*12

**Unique features:**

- The product can achieve high bonding strength on very small bonding surfaces.
- It is particularly suitable for bonding metal and porous materials.
- It is offered in an economical 12-pack, providing an excellent cost-performance ratio.

**Good for:**

- Rubber, some plastics
- Leather, wood
- Paper

**Used in:**

Suitable for application on metal and porous materials, as well as small bonding surfaces.

P-20 20g



**Strength:** 10 mpa  
**Viscosity:** 40-60 cps  
**CBM:** 0.035 M<sup>3</sup>/CTN  
**Package:** 24pcs/box, 12boxes/ctn

Shelf Life	Net Weight
15 Months	20 G

**Unique features:**

- The product can achieve high bonding strength on very small bonding surfaces.
- It is particularly suitable for bonding metal and porous materials.

**Good for:**

- Rubber, some plastics
- Leather, wood
- Paper

**Used in:**

Suitable for bonding most low surface energy materials.

P-50 50g



**Strength:** 10 mpa  
**Viscosity:** 40-60 cps  
**CBM:** 0.065 M<sup>3</sup>/CTN  
**Package:** 24pcs/box, 12boxes/ctn

Shelf Life	Net Weight
15 Months	50 G

**Unique features:**

- The product can achieve high bonding strength on very small bonding surfaces.
- It is particularly suitable for bonding metal and porous materials.

**Good for:**

- Rubber, some plastics
- Leather, wood
- Paper

**Used in:**

Suitable for bonding most low surface energy materials.

# GENERAL SUPER GLUE



**495 (box)** 20g

**Strength:** 10 mpa

**Viscosity:** 40-60 cps

**CBM:** 0.035 M<sup>3</sup>/CTN

**Package:** 24pcs/box, 12boxes/ctn

Shelf Life	Net Weight
15 Months	20 G

#### Unique features:

- Medium viscosity, high strength, low whitening.
- Strong impact resistance, wide applicability.
- After bonding, it exhibits certain water resistance.

#### Good for:

- Leather
- Rubber, plastics
- Metal

#### Used in:

This product is a newly developed environmentally friendly, flexible universal adhesive by Ju'eju Company. It features medium viscosity, high strength, low whitening, strong impact resistance, and wide applicability. After bonding, it exhibits certain water resistance and is particularly suitable for bonding leather, plastic, rubber, and metal.



**495 (card)** 20g

**Strength:** 10 mpa

**Viscosity:** 40-60 cps

**CBM:** 0.044 M<sup>3</sup>/CTN

**Package:** 12pc/box, 12boxes/ctn

Shelf Life	Net Weight
15 Months	20 G

#### Unique features:

- Medium viscosity, high strength, low whitening.
- Strong impact resistance, wide applicability.
- After bonding, it exhibits certain water resistance.

#### Good for:

- Leather
- Rubber, plastics
- Metal

#### Used in:

This product is a newly developed environmentally friendly, flexible universal adhesive by Ju'eju Company. It features medium viscosity, high strength, low whitening, strong impact resistance, and wide applicability. After bonding, it exhibits certain water resistance and is particularly suitable for bonding leather, plastic, rubber, and metal.



**496** 20g

**Strength:** 10 mpa

**Viscosity:** 1500 cps

**CBM:** 0.035 M<sup>3</sup>/CTN

**Package:** 24pcs/box, 12boxes/ctn

Shelf Life	Net Weight
15 Months	20 G

#### Unique features:

- The product can achieve high bonding strength on very small bonding surfaces.
- Higher viscosity is suitable for certain scenarios such as vertical applications.

#### Good for:

- Rubber, some plastics
- Leather, wood
- Paper

#### Used in:

The high viscosity nature of the adhesive is advantageous for bonding materials with larger surface gaps.



# GENERAL SUPER GLUE



## NL-10 Brush Bottle 10g

**Strength:** 10 mpa

**Viscosity:** 40-60 cps

**CBM:** 0.034 M<sup>3</sup>/CTN

**Package:** 12pc/box, 12boxes/ctn

Shelf Life	Net Weight
15 Months	10 G

### Unique features:

- High strength bonding can be achieved on very small bonding surfaces.
- It has good toughness and extensibility, providing a smoothing effect.
- The bottle cap comes with an integrated brush, making the operation more convenient.

### Good for:

- Rubber, some plastics
- Leather, wood
- Paper

### Used in:

The high viscosity nature of the adhesive is advantageous for bonding materials with larger surface gaps.



## T-13 13g

**Strength:** 6.5 mpa

**Viscosity:** 2-5 cps

**CBM:** 0.027 M<sup>3</sup>/CTN

**Package:** 24pcs/box, 12boxes/ctn

Shelf Life	Net Weight
15 Months	13 G

### Unique features:

- High flowability
- Fast curing speed
- Wide applicability

### Good for:

- Plastic sheets, foamed materials
- Metal, rubber, plastic
- Ceramics, leather

### Used in:

The low viscosity and watery characteristics are suitable for bonding materials with very small surface gaps. It works well with difficult-to-bond materials such as plastic sheets and foamed materials, making it suitable for both household repairs and large-scale use in factories and enterprises.

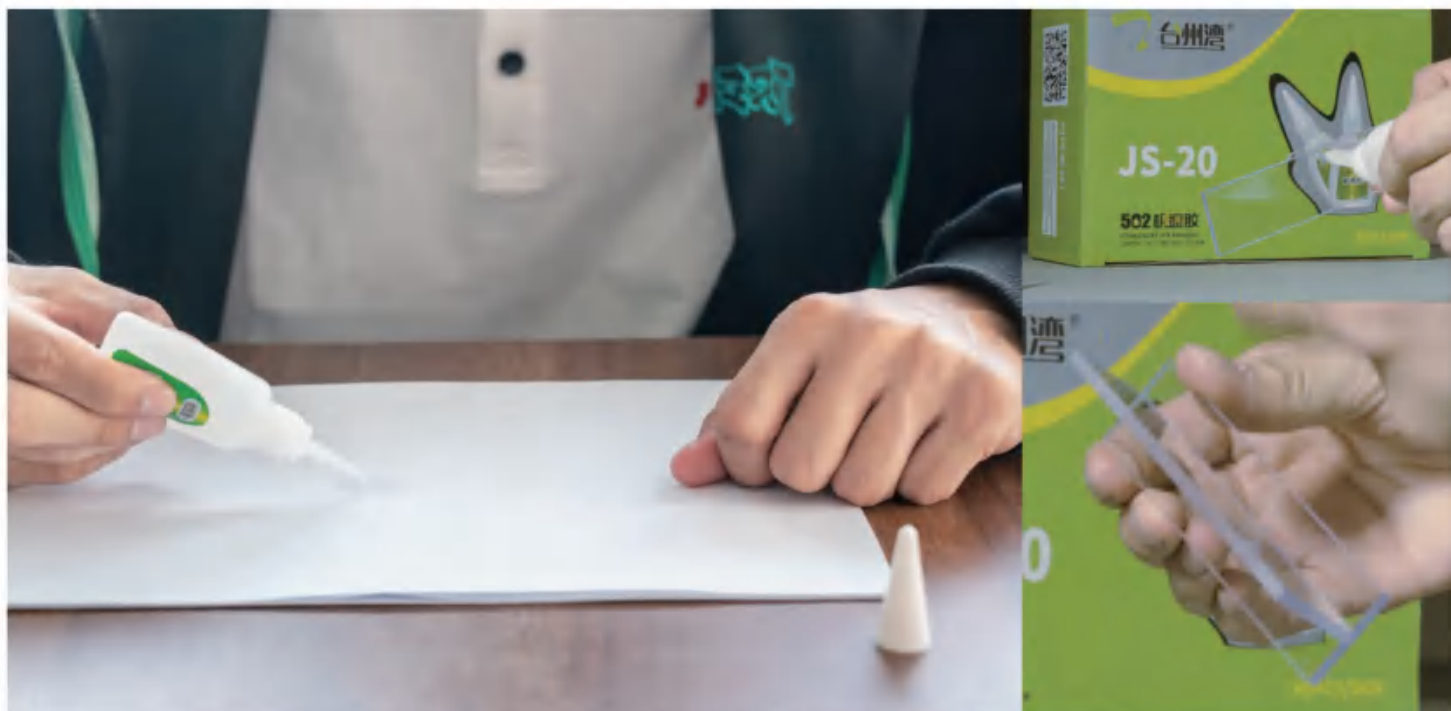
# ACCELERATIVE SUPER GLUE



- The product has strong versatility and is suitable for bonding various types of materials.
- Fast curing speed, no need to wait, long shelf life, durable usage, easy to use, and user-friendly operation.
- The product has strong weather resistance and wide applicability.



# ACCELERATIVE SUPER GLUE PRODUCT GUIDE



	Product Attributes						Metals			Plastics			Other Materials				
	Strength	Viscosity	Cure Time	Dry Color	Temp Range	Shelf Life	Aluminum	Iron	Steel	PVC	ABS	PC	Wood	Rubber	Leather	Glass	Ceramic
JS-20	6.5 mpa	2-5 cps	≤8 s	Clear	-20~125(°C)	≤10 months	+	+	+	+	++	++	++	++	+	++	++
JS-50	6.5 mpa	2-5 cps	≤8 s	Clear	-20~125(°C)	≤10 months	+	+	+	+	++	++	++	++	+	++	++



JS-20



JS-50

# ACCELERATIVE SUPER GLUE



**JS-20** 20g

**Strength:** 6.5 mpa

**Viscosity:** 2-5 cps

**CBM:** 0.058 M<sup>3</sup>/CTN

**Package:** 50pcs/box, 10box/ctn

Shelf Life	Net Weight
10 Months	20 G

#### Unique features:

- The product has strong versatility and is suitable for bonding various materials.
- It bonds within three seconds, providing instant adhesion.
- It also exhibits strong weather resistance and has wide applicability.

#### Good for:

- Wood
- Backlit cloth
- Plastic
- Handicrafts.

#### Used in:

Small-size packaging is suitable for household, travel, and work use, while large-size packaging is suitable for wood processing companies and high-end flooring enterprises.



**JS-50** 50g

**Strength:** 6.5 mpa

**Viscosity:** 2-5 cps

**CBM:** 0.071 M<sup>3</sup>/CTN

**Package:** 30pcs/box, 10box/ctn

Shelf Life	Net Weight
10 Months	50 G

#### Unique features:

- The product has strong versatility and is suitable for bonding various materials.
- It bonds within three seconds, providing instant adhesion.
- It also exhibits strong weather resistance and has wide applicability.

#### Good for:

- Wood
- Backlit cloth
- Plastic, shoe materials
- Handicrafts.

#### Used in:

Small-size packaging is suitable for household, travel, and work use, while large-size packaging is suitable for wood processing companies and high-end flooring enterprises.

# TUBE GLUE

- The low viscosity product is highly practical, and it exhibits good stability and curing strength.
- The product is suitable for bonding materials such as rubber, metal, wood, glass, ceramics, and plastic.
- The product has been certified by various testing organizations and meets all environmental requirements.
- The product is designed with various aluminum tube packaging forms, ensuring a long shelf life.



# TUBE GLUE PRODUCT GUIDE



	Product Attributes						Metals			Plastics			Other Materials				
	Strength	Viscosity	Cure Time	Dry Color	Temp Range	Shelf Life	Aluminum	Iron	Steel	PVC	ABS	PC	Wood	Rubber	Leather	Glass	Ceramic
PA-3	10 mpa	40-60 cps	≤ 8 s	Clear	-20~125(°C)	≤24 months	+	+	+	+	++	++	++	++	+	++	++
OK-101	10 mpa	40-60 cps	≤ 8 s	Clear	-20~125(°C)	≤24 months	+	+	+	+	++	++	++	++	+	++	++
GS series	10 mpa	40-60 cps	≤ 8 s	Clear	-20~125(°C)	≤24 months	+	+	+	+	++	++	++	++	+	++	++



PA-3



OK-101



GS-1



GS-2



GS-3



GS-4



GS-6

# TUBE GLUE

PA-3 3g 3\*4



**Strength:** 10 mpa  
**Viscosity:** 40-60 cps  
**CBM:** 0.025 M<sup>3</sup>/CTN  
**Package:** 12pcs/card, 24cards/ctn

Shelf Life	Net Weight
24 Months	1.5 G/2 G/2.5 G/3 G

#### Unique features:

- Certified by various testing organizations.
- Complies with environmental requirements for aluminum tube packaging design.
- Low viscosity product, highly practical, long shelf life.
- Economical 12-card pack with excellent cost-performance ratio.

#### Good for:

- Wood, glass
- Metal, rubber, plastic
- Ceramics, leather

#### Used in:

The low viscosity product is highly practical and exhibits good stability and curing strength. It is suitable for bonding materials with very small surface gaps. It also performs well with difficult-to-bond materials, making it suitable for both household repairs and large-scale use in factories and enterprises.

OK-101 3g 1\*12



**Strength:** 10 mpa  
**Viscosity:** 40-60 cps  
**CBM:** 0.027 M<sup>3</sup>/CTN  
**Package:** 12pcs/card, 50cards/ctn

Shelf Life	Net Weight
24 Months	1.5 G/2 G/2.5 G/3 G

#### Unique features:

- Certified by various testing organizations.
- Complies with environmental requirements for aluminum tube packaging design.
- Low viscosity product, highly practical, long shelf life.
- Economical 12-card pack with excellent cost-performance ratio.

#### Good for:

- Wood, glass
- Metal, rubber, plastic
- Ceramics, leather

#### Used in:

The low viscosity product is highly practical and exhibits good stability and curing strength. It is suitable for bonding materials with very small surface gaps. It also performs well with difficult-to-bond materials, making it suitable for both household repairs and large-scale use in factories and enterprises.

GS-1 3g



**Strength:** 10 mpa  
**Viscosity:** 40-60 cps  
**CBM:** 0.0463 M<sup>3</sup>/CTN  
**Package:** 24card/box 12box/ctn

Shelf Life	Net Weight
24 Months	2 G/3 G

#### Unique features:

- Certified by various testing organizations.
- Complies with environmental requirements for aluminum tube packaging design.
- Low viscosity product, highly practical, long shelf life.
- Economical 12-card pack with excellent cost-performance ratio.

#### Good for:

- Wood, glass
- Metal, rubber, plastic
- Ceramics, leather

#### Used in:

The low viscosity product is highly practical and exhibits good stability and curing strength. It is suitable for bonding materials with very small surface gaps. It also performs well with difficult-to-bond materials, making it suitable for both household repairs and large-scale use in factories and enterprises.

# TUBE GLUE



**GS-2**

**3g\*2**

**Strength:** 10 mpa

**Viscosity:** 40-60 cps

**CBM:** 0.042 M<sup>3</sup>/CTN

**Package:** 2pcs/card, 12cards/box, 12boxes/ctn

Shelf Life	Net Weight
24 Months	2 G/3 G

**Unique features:**

- Certified by various testing organizations.
- Complies with environmental requirements for aluminum tube packaging design.
- Low viscosity product, highly practical, long shelf life.
- Economical 12-card pack with excellent cost-performance ratio.

**Good for:**

- Wood, glass
- Metal, rubber, plastic
- Ceramics, leather

**Used in:**

The low viscosity product is highly practical and exhibits good stability and curing strength. It is suitable for bonding materials with very small surface gaps. It also performs well with difficult-to-bond materials, making it suitable for both household repairs and large-scale use in factories and enterprises.



**GS-3**

**3g\*3**

**Strength:** 10 mpa

**Viscosity:** 40-60 cps

**CBM:** 0.045 M<sup>3</sup>/CTN

**Package:** 3pcs/card, 12cards/boxes, 12boxes/ctn

Shelf Life	Net Weight
24 Months	2 G/3 G

**Unique features:**

- Certified by various testing organizations.
- Complies with environmental requirements for aluminum tube packaging design.
- Low viscosity product, highly practical, long shelf life.
- Economical 12-card pack with excellent cost-performance ratio.

**Good for:**

- Wood, glass
- Metal, rubber, plastic
- Ceramics, leather

**Used in:**

The low viscosity product is highly practical and exhibits good stability and curing strength. It is suitable for bonding materials with very small surface gaps. It also performs well with difficult-to-bond materials, making it suitable for both household repairs and large-scale use in factories and enterprises.



**GS-4**

**3g\*4**

**Strength:** 10 mpa

**Viscosity:** 40-60 cps

**CBM:** 0.058 M<sup>3</sup>/CTN

**Package:** 4pcs/card, 12cards/box, 12boxes/ctn

Shelf Life	Net Weight
24 Months	2 G/3 G

**Unique features:**

- Certified by various testing organizations.
- Complies with environmental requirements for aluminum tube packaging design.
- Low viscosity product, highly practical, long shelf life.
- Economical 12-card pack with excellent cost-performance ratio.

**Good for:**

- Wood, glass
- Metal, rubber, plastic
- Ceramics, leather

**Used in:**

The low viscosity product is highly practical and exhibits good stability and curing strength. It is suitable for bonding materials with very small surface gaps. It also performs well with difficult-to-bond materials, making it suitable for both household repairs and large-scale use in factories and enterprises.



# TUBE GLUE

GS-6

3g\*6



**Strength:** 10 mpa

**Viscosity:** 40-60 cps

**CBM:** 0.074 M<sup>3</sup>/CTN

**Package:** 6pcs/card 12cards/box 12boxes/ctn

**Shelf Life**

24 Months

**Net Weight**

2 G/3 G

#### Unique features:

- Certified by various testing organizations.
- Complies with environmental requirements for aluminum tube packaging design.
- Low viscosity product, highly practical, long shelf life.
- Economical 12-card pack with excellent cost-performance ratio.

#### Good for:

- Wood, glass
- Metal, rubber, plastic
- Ceramics, leather

#### Used in:

The low viscosity product is highly practical and exhibits good stability and curing strength. It is suitable for bonding materials with very small surface gaps. It also performs well with difficult-to-bond materials, making it suitable for both household repairs and large-scale use in factories and enterprises.

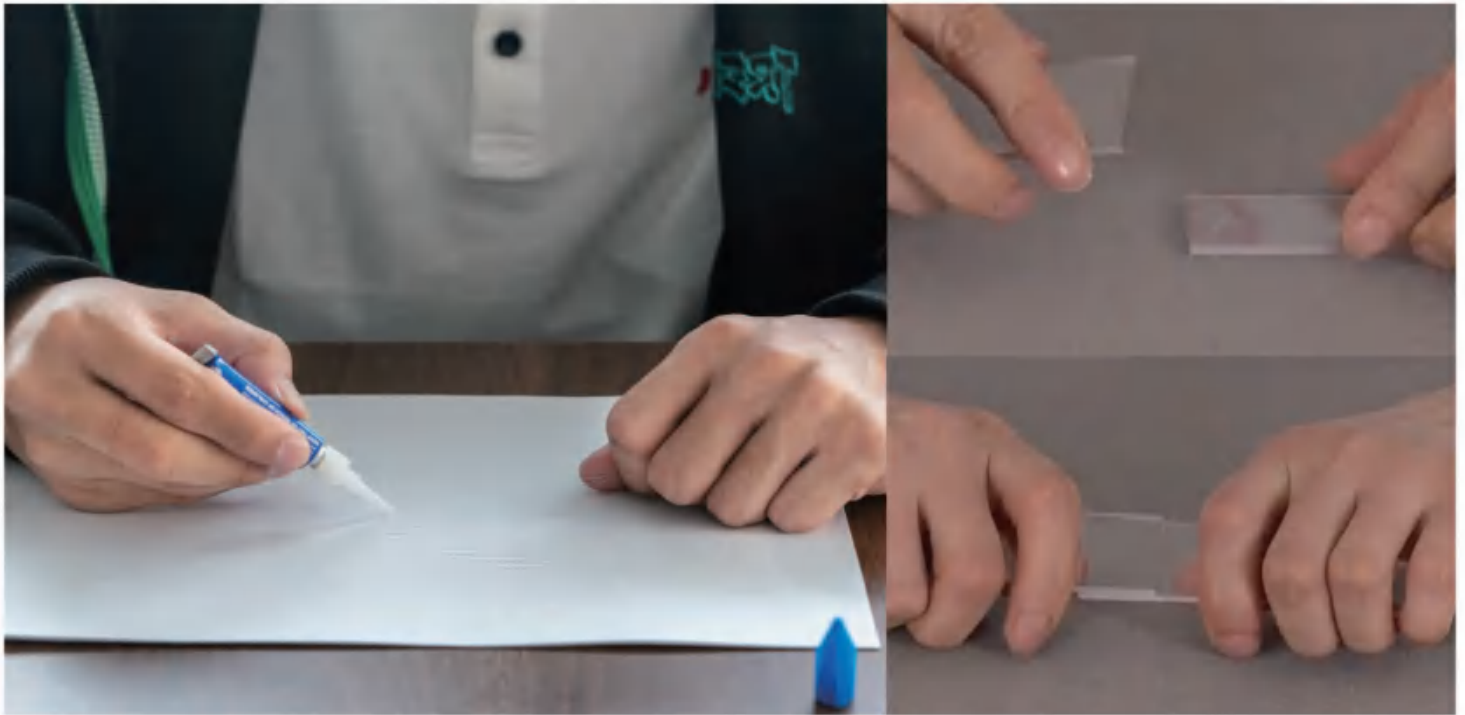


# GEL GLUE

Juju gel adhesive is a high-strength and high-viscosity single-component ethyl instant glue. Its high viscosity and low fluidity characteristics are widely used in vertical bonding operations and bonding porous materials.



# GEL GLUE PRODUCT GUIDE



	Product Attributes						Metals			Plastics			Other Materials				
	Strengt	Viscosity	Cure Time	Dry Color	Temp Range	Shelf Life	Aluminum	Iron	Steel	PVC	ABS	PC	Wood	Rubber	Leather	Glass	Ceramic
GEL-1	10 mpa	100000 cps	≤ 8 s	Clear	-20~125(°C)	≤24 moths	+	+	+	+	++	++	++	+	++	+	+
GEL-2	10 mpa	100000 cps	≤ 8 s	Clear	-20~125(°C)	≤24 moths	+	+	+	+	++	++	++	+	++	+	+
GEL-20	10 mpa	100000 cps	≤ 8 s	Clear	-20~125(°C)	≤15 moths	+	+	+	+	++	++	++	+	++	+	+



GEL-1



GEL-2



GEL-20

# GEL GLUE



## GEL-1 3g

**Strength:** 10 mpa

**Viscosity:** 100000 cps

**CBM:** 0.0463 M<sup>3</sup>/CTN

**Package:** 24card/box 12box/ctn

Shelf Life	Net Weight
24 Months	3 G

### Unique features:

- High viscosity
- Low fluidity
- High-strength single-component ethyl instant glue

### Good for:

- ABS, PMMA, PVC
- Metal, some plastics
- Ceramics, wood

### Used in:

Juju gel adhesive is a high-strength and high-viscosity single-component ethyl instant glue. Its high viscosity and low fluidity characteristics are widely used in vertical bonding operations and bonding porous materials.



## GEL-2 3g

**Strength:** 10 mpa

**Viscosity:** 100000 cps

**CBM:** 0.042 M<sup>3</sup>/CTN

**Package:** 2pcs/card, 12cards/box, 12boxes/ctn

Shelf Life	Net Weight
24 Months	3 G

### Unique features:

- High viscosity
- Low fluidity
- High-strength single-component ethyl instant glue

### Good for:

- ABS, PMMA, PVC
- Metal, some plastics
- Ceramics, wood

### Used in:

Juju gel adhesive is a high-strength and high-viscosity single-component ethyl instant glue. Its high viscosity and low fluidity characteristics are widely used in vertical bonding operations and bonding porous materials.



## GEL-20 20g

**Strength:** 10 mpa

**Viscosity:** 100000 cps

**CBM:** 0.044 M<sup>3</sup>/CTN

**Package:** 12pc/box, 12boxes/ctn

Shelf Life	Net Weight
15 Months	20 G

### Unique features:

- High viscosity
- Low fluidity
- High-strength single-component ethyl instant glue

### Good for:

- ABS, PMMA, PVC
- Metal, some plastics
- Ceramics, wood

### Used in:

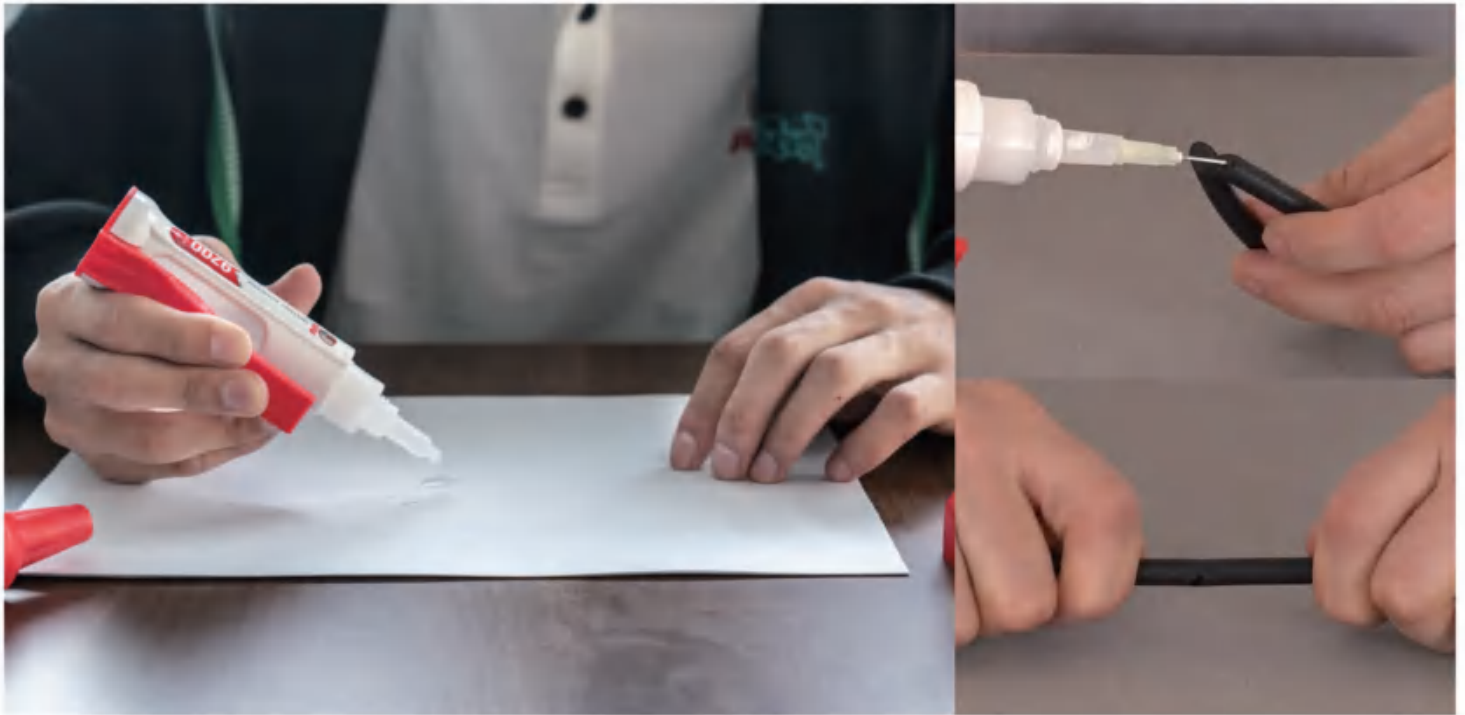
Juju gel adhesive is a high-strength and high-viscosity single-component ethyl instant glue. Its high viscosity and low fluidity characteristics are widely used in vertical bonding operations and bonding porous materials.



Juju special adhesives include the Juju odorless low-whitening methoxy series and the Juju casting powder strong adhesive series. These high-end adhesive products have been developed to meet the needs of specific scenarios and customer demands.



# SPECIAL GLUE PRODUCT GUIDE



	Product Attributes						Metals			Plastics			Other Materials				
	Strength	Viscosity	Cure Time	Dry Color	Temp Range	Shelf Life	Aluminum	Iron	Steel	PVC	ABS	PC	Wood	Rubber	Leather	Glass	Ceramic
9700 reinforcing holder	16 mpa	140-180 cps	≤ 8 s	Clear	-20-125(°C)	≤12 months	+	+	+	+	++	++	++	++	+	++	++
9708 leptai bottle	16 mpa	80-120 cps	≤ 8 s	Clear	-20-125(°C)	≤12 months	+	+	+	+	++	++	++	++	+	++	++
NL-9 nail glue	10 mpa	40-60 cps	≤ 8 s	Clear	-20-125(°C)	≤15 months	+	+	+	+	++	++	++	++	+	++	++



9700 reinforcing holder



9708 leptai bottle



NL-9 nail glue

# SPECIAL GLUE



## 9700 Reinforcing Holder

**Strength:** 16 mpa  
**Viscosity:** 140-180 cps  
**CBM:** 0.039 M<sup>3</sup>/CTN  
**Package:** 1pc/box 100box/ctn

Shelf Life	Net Weight
12 Months	20 G

### Unique features:

- Low odor, low whitening methoxy formula.
- Unique human ergonomics handle design, scientific and precise control of adhesive.
- Built-in sealed steel needle: longer shelf life, Consistent performance.

### Good for:

- Foam, wood, brick, glass
- Paper, leather, ceramics, plastic
- Concrete, metal, rubber, fabric

### Used in:

The most advanced technology formula, the strongest bonding effect. Universal adhesive, suitable for most adhesive materials.



## 9708 20g

**Strength:** 16 mpa  
**Viscosity:** 80-120 cps  
**CBM:** 0.044 M<sup>3</sup>/CTN  
**Package:** 12pc/box, 12boxes/ctn

Shelf Life	Net Weight
12 Months	20 G

### Unique features:

- Low odor, low whitening.
- Methoxy formula.
- The most advanced technology formula, the strongest bonding effect.

### Good for:

- Foam, wood, brick, glass
- Paper, leather, ceramics, plastic
- Concrete, metal, rubber, fabric

### Used in:

Universal adhesive, suitable for the vast majority of adhesive materials.



## NL-9 Nail Glue 10g

**Strength:** 10 mpa  
**Viscosity:** 40-60 cps  
**CBM:** 0.034 M<sup>3</sup>/CTN  
**Package:** 12pc/box, 12boxes/ctn

Shelf Life	Net Weight
15 Months	10 G

### Unique features:

- High-strength bonding can be achieved on very small bonding surfaces.
- It has good toughness and extensibility, providing a smoothing effect.
- The bottle cap comes with an integrated brush, making the operation more convenient.

### Good for:

- Rubber, some plastics
- Leather, wood, paper
- Nails, vertical operations

### Used in:

This product is advantageous for bonding on materials with larger surface gaps and provides strong adhesion. It has good toughness, smoothing effect, and can maintain its performance for a long time. It can be used not only for bonding but also for polishing nails and other applications.



# RAW CYANOACRYLATE

Founded in 1997, Juju has now become an expert in the field of adhesives. Juju adhesives have a long storage time and high strength. Every drop of adhesive undergoes six destructive tests, and for the past 25 years, there has been no quality issue.





# THREADLOCKER



Threadlocker is a revolutionary product for thread locking and sealing, catering to a wide range of applications, from precision components to heavy-duty structural equipment. OKEBOND offers threadlockers of various viscosities and strengths, suitable for different purposes and environments, including applications in various harsh and adverse conditions.

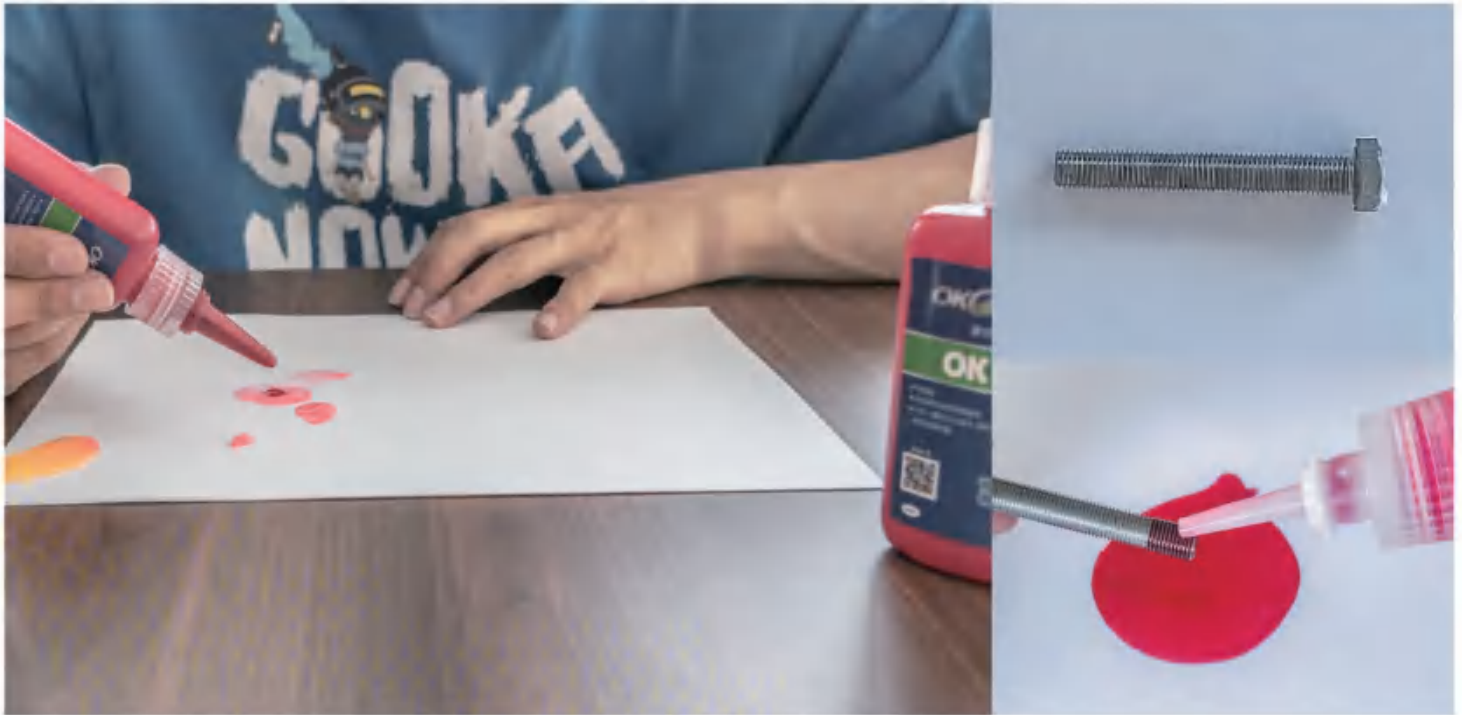
- Prevent accidental movement, loosening, leaks, and corrosion; resistant to vibration.
- Single-component, easy-to-apply adhesive, and easy to remove.
- Can be applied to all types of fasteners - reduces inventory costs.
- Thread sealing - can be used for sealing through-holes.



- Medium Strength
- It has oil holding capacity and temperature resistance.
- Suitable for all types of metal fasteners.

- High Strength
- High oil and temperature resistance.
- Can withstand a small amount of industrial oil and is suitable for inert metal surface.

# THREADLOCKER PRODUCT GUIDE



## Product Attributes

## Product Advantages

	Viscosity	Cure Time	Color	Temp Range
OK 243	1300-3000 cps	≤ 24h	Blue	-40~150(°C)
OK 263	400-600 cps	≤ 24h	Red	-40~150(°C)
OK 272	4000-15000 cps	≤ 24h	Orange-red	-40~200(°C)
OK 277	6000-8000 cps	≤ 24h	Red	-40~150(°C)

This product prevents bolt loosening and helps bolts resist vibration and impact. It is a fluid liquid that can completely fill the gaps between threads. OKEBOND threadlocker ensures the permanent safety of bolt assemblies and provides uniform assembly torque to avoid friction corrosion. Threadlocker locks and seals threaded components, preventing them from vibrating, corroding, or wearing. However, you must choose the appropriate threadlocker based on the strength, shape, and disassembly requirements of the components.



OK 243



OK 263



OK 272



OK 277

# THREADLOCKER



**OK 243** 50ml

**Viscosity:** 1300-3000 cps

**Appearance:** Blue liquid

**Feature:** Medium strength, good oil resistance.

Shelf Life	Volume
15 Months	50ml/250ml

#### Main advantages:

- It can be applied to all metal substrates, including inert metals.
- It can withstand a small amount of industrial oil contamination.
- Used to prevent loosening in vibrating parts, such as pump gearboxes and compressors, and other equipment.

#### Used in:

It can be disassembled using hand tools, but disassembly may be difficult. It is suitable for mechanical engineering, printing machines, pumps, compressors, bolt installations, gearboxes, etc.



**OK 263** 50ml

**Viscosity:** 400-600 cps

**Appearance:** Red liquid

**Feature:** High strength and excellent solvent resistance.

Shelf Life	Volume
15 Months	50ml/250ml

#### Main advantages:

- Can be applied to all metal substrates, including inert metals.
- Can withstand small amounts of industrial oil contamination.
- Ideal permanent locking material for engine compartments or pump housings.

#### Used in:

Disassembly using hand tools will be very difficult, and localized heating may be required for disassembly. Suitable for permanent fixing of heavy machinery, column head bolts, and other equipment bolts.



**OK 272** 50ml

**Viscosity:** 4000-15000 cps

**Appearance:** Orange-red liquid

**Feature:** High strength, heat-resistant.

Shelf Life	Volume
15 Months	50ml/250ml

#### Main advantages:

- Suitable for permanent applications.
- Applicable for permanent locking and sealing of large-sized bolts.
- Has excellent impact resistance and vibration resistance.

#### Used in:

Disassembly with hand tools will be very difficult, and localized heating may be required for disassembly. Suitable for permanent fixation of heavy machinery, column head bolts, and other equipment bolts.

# THREADLOCKER



OK 277

50ml

**Viscosity:** 6000-8000 cps

**Appearance:** Red liquid

**Feature:** High strength, high viscosity.

Shelf Life	Volume
15 Months	50ml/250ml

#### Main advantages:

- Suitable for permanent construction.
- Used for permanent locking and sealing of screws below M36.
- It has excellent chemical resistance and is suitable for active metal surfaces to prevent thread rust and corrosion.

#### Used in:

Disassembly using hand tools will be very difficult, and local heating is required for disassembly. It is suitable for permanent fixing of heavy machinery, stud bolts, and other equipment bolts.

# THREADLOCKER PRODUCT GUIDE



## Product Attributes

## Product Advantages

Pipe Thread Sealant

	Viscosity	Pressure resistance	Color	Temp Range
OK 545	9000-20000 cps	≤ 10,000 psi	Purple	-40~150(°C)
OK 554	1500-3500 cps	≤ 10,000 psi	Red	-50~150(°C)
OK 567	280,000-800,000 cps	≤ 10,000 psi	Beige	-40~200(°C)
OK 577	70,000-130,000 cps	≤ 10,000 psi	Yellow	-40~150(°C)

Using OKEBOND pipe thread sealant can prevent gas and liquid leakage. It is particularly suitable for sealing applications in high-pressure and low-pressure pipelines. They can fill gaps between threaded components, providing an immediate, low-pressure seal. After complete curing, they can provide high-strength sealing for most pipeline systems.



OK 545



OK 554



OK 567



OK 577

# THREADLOCKER



**OK 545** 50ml

**Viscosity:** 9000-20000 cps

**Appearance:** Purple, anaerobic liquid

**Feature:** Medium strength, hydraulic and pneumatic sealing.

Shelf Life	Volume
15 Months	50ml

#### Main advantages:

- Locks and seals metal pipes and fittings.
- Special formula with excellent lubricating properties.
- Suitable for sealing fine-threaded assemblies in hydraulic and pneumatic devices, as well as general-purpose small fittings.

#### Used in:

Suitable for removing dirt, resin, metal shavings, paint, grease, and oil from components.



**OK 554** 50ml

**Viscosity:** 1500-3500 cps

**Appearance:** Red, anaerobic liquid

**Feature:** High strength, low-temperature resistance, suitable for refrigeration system pipelines.

Shelf Life	Volume
15 Months	50ml/250ml

#### Main advantages:

- Can be used on all metal substrates, including inert metals.
- Resistant to a small amount of industrial oil contamination.
- Ideal permanent locking material for engine compartments or pump housings.

#### Used in:

Suitable for removing dirt, resin, metal shavings, paint, oil, and grease from components.



**OK 567** 50ml

**Viscosity:** 280,000-800,000 cps

**Appearance:** Beige paste

**Feature:** Low strength, high temperature resistance, suitable for stainless steel joints.

Shelf Life	Volume
15 Months	50ml/250ml

#### Main advantages:

- Low strength, slow curing.
- Suitable for locking metal tapered threads and fittings.
- Suitable for stainless steel and high-temperature applications.

#### Used in:

Specific surface conditions must be considered: roughness, smoothness, porosity, presence or absence of coatings, cleanliness, flexibility, component size, and surface energy.

# THREADLOCKER



**OK 577**

50ml

**Viscosity:** 6000-8000 cps

**Appearance:** Yellow paste

**Feature:** High strength, universal type,  
suitable for coarse threads.

Shelf Life	Volume
15 Months	50ml

#### Main advantages:

- Universal type.
- Slow cure, thixotropic.
- Suitable for metal pipes with coarse threads and inert metal surfaces.

#### Used in:

You must consider specific surface conditions such as roughness, smoothness, porosity, presence or absence of coatings, cleanliness, flexibility, component size, and surface energy.



# MS SEALANT

MS Sealant is a highly versatile, strong bonding, and powerful structural adhesive used in construction. It is an ideal adhesive for architectural decorative materials, offering exceptional bonding strength and ease of use. Suitable for all types of construction and decorative materials, it serves as the best alternative to screws and nails, saving time, space, and enhancing efficiency in bonding.

- The adhesive has a wide bonding range, excellent sealing effect, and fast bonding speed.
- It exhibits high sealing and bonding strength, providing strong fixation.
- The material is environmentally friendly, and there are no adverse effects after curing, with a relatively long storage period.
- It is easy to apply (can be scraped or coated).





# MS SEALANT PRODUCT GUIDE



## Product Attributes

Strength	Viscosity	Cure Time	Dry Color	Temp Range	Shelf Life
3 mpa	8000 cps	≤24h	White	-45-95(°C)	≤12 months
3 mpa	8000 cps	≤24h	Clear	-20-125(°C)	≤12 months

## Product Advantages

JUJU's formaldehyde-free MS adhesive is an eco-friendly, odorless wall glue that doesn't contain harmful substances. It's flexible, durable, and can achieve seamless bonding without damaging walls, making it an ideal wall adhesive.

8602W

8605C



8602W



8605C

# MS SEALANT



**8602W**

120ml

**Viscosity:** 8000 cps

**Appearance:** White

**Feature:** Safe green, mildew proof and waterproof.

Shelf Life	Volume
12 Months	60ML/120ML

#### Main advantages:

- Instead of nail traceless bonding.
- Flexible colloids are durable and firm.
- Waterproof, mildew, environmentally friendly and tasteless.

#### Used in:

Kitchen and bathroom, hardware, picture frame, aluminum iron copper products, marble, ceramics, glass, mirror, footline, door frame door lock, plastic products, wood, decorative pieces, daily necessities.



**8605C**

60ml

**Viscosity:** 8000 cps

**Appearance:** Clear

**Feature:** Safe green, mildew proof and waterproof.

Shelf Life	Volume
12 Months	60ML/120ML

#### Main advantages:

- Instead of nail traceless bonding.
- Flexible colloids are durable and firm.
- Waterproof, mildew, environmentally friendly and tasteless.

#### Used in:

Kitchen and bathroom, hardware, picture frame, aluminum iron copper products, marble, ceramics, glass, mirror, footline, door frame door lock, plastic products, wood, decorative pieces, daily necessities.

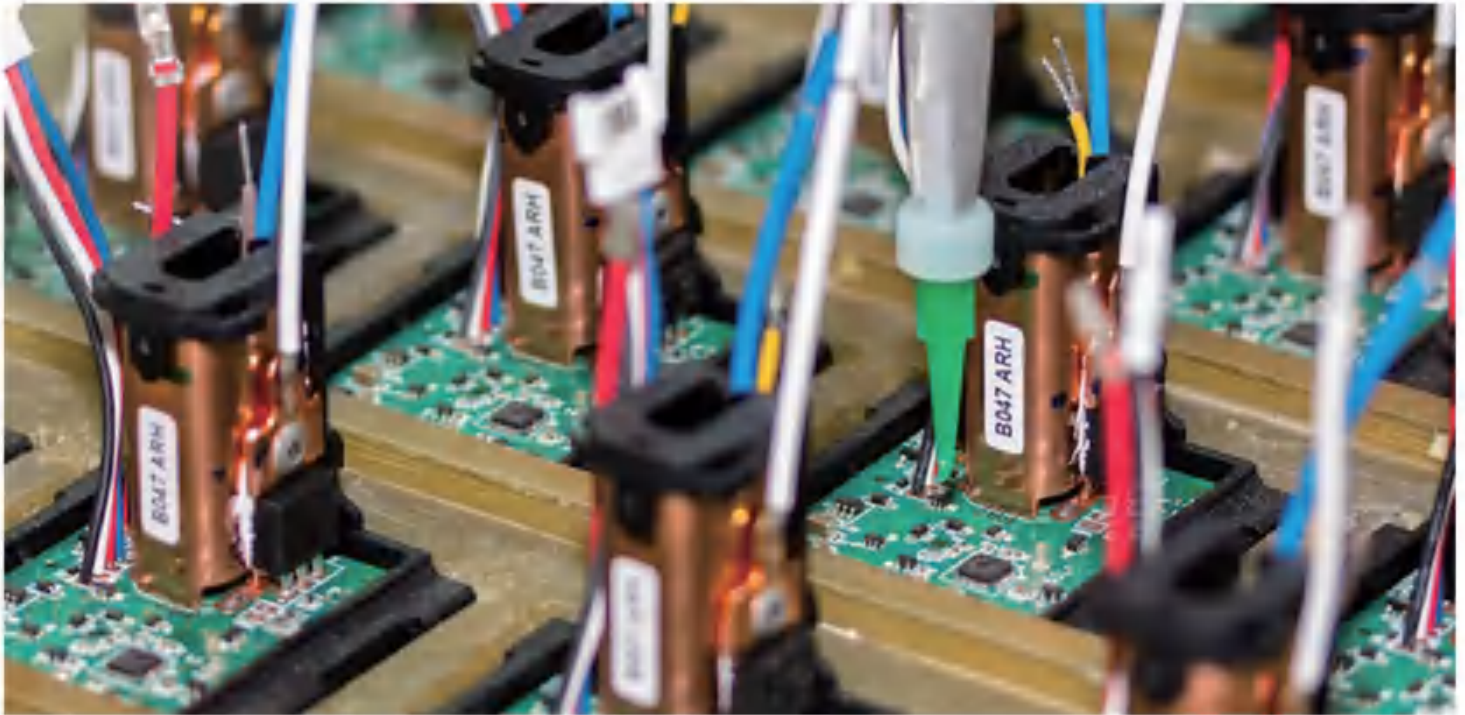
# RTV SILICONE SEALANT

RTV silicone is a type of room temperature vulcanizing (RTV) silicone rubber, which can cure at room temperature. Typically, its molecular chains have active functional groups such as hydroxyl and vinyl groups, and it has a relatively low molecular weight. There are two types: single-component room temperature vulcanizing silicone rubber and two-component room temperature vulcanizing silicone rubber.

- It has good adhesion performance.
- Non-toxic, non-polluting, non-corrosive.
- It has good electrical insulation and arc resistance, aging resistance, moisture resistance, and good adhesion performance.
- The cured material has excellent electrical insulation properties and provides moisture and shock resistance.



# RTV SILICONE SEALANT PRODUCT GUIDE



## Product Attributes

## Product Advantages

	Viscosity	Cure Time	Tensile strength	Temp Range
RED	3000-20000 cps	≤ 10min	≥ 9.0	-50-260(°C)
BLACK	3000-20000 cps	≤ 10min	≥ 9.0	-50-260(°C)
GREY	3000-20000 cps	≤ 10min	≥ 9.0	-50-260(°C)
CLEAR	3000-20000 cps	≤ 10min	≥ 9.0	-50-260(°C)

RTV silicone Sealant has excellent adhesion properties, and the cured adhesive exhibits excellent electrical insulation performance with moisture and vibration resistance. It is non-toxic, non-polluting, and non-corrosive. It has good electrical insulation and arc resistance, is resistant to aging and moisture, and exhibits excellent adhesion properties. Within the working temperature range of -60°C to +200°C, the performance of RTV silicone rubber adhesive remains largely unchanged.



RED (card)



BLACK (card)



GREY (card)



CLEAR (card)



BLACK (box)



GREY (box)

# RTV SILICONE SEALANT



## RED (card) 35g

Viscosity: 3000-20000 cps

Tensile strength:  $\geq 9.0$

Temp range: -50-260(°C)

Shelf Life	Net Weight
12 Months	35G

### Main advantages:

- After curing, it can provide protection and is not prone to fractures.
- It does not shrink or release toxic substances, ensuring safety and reliability.
- It has a wide range of applications and does not have any corrosive properties.

### Used in:

Widely used in bonding, sealing, and waterproofing of electronic components, semiconductor materials, electronic appliances, etc. It is also used for water resistance, sealing, and potting of electric heaters, electronic instruments, and electronic components.



## BLACK (card) 35g

Viscosity: 3000-20000 cps

Tensile strength:  $\geq 9.0$

Temp range: -50-260(°C)

Shelf Life	Net Weight
12 Months	35G

### Main advantages:

- After curing, it can provide protection and is not prone to fractures.
- It does not shrink or release toxic substances, ensuring safety and reliability.
- It has a wide range of applications and does not have any corrosive properties.

### Used in:

Widely used in bonding, sealing, and waterproofing of electronic components, semiconductor materials, electronic appliances, etc. It is also used for water resistance, sealing, and potting of electric heaters, electronic instruments, and electronic components.



## GREY (card) 35g

Viscosity: 3000-20000 cps

Tensile strength:  $\geq 9.0$

Temp range: -50-260(°C)

Shelf Life	Net Weight
12 Months	35G

### Main advantages:

- After curing, it can provide protection and is not prone to fractures.
- It does not shrink or release toxic substances, ensuring safety and reliability.
- It has a wide range of applications and does not have any corrosive properties.

### Used in:

Widely used in bonding, sealing, and waterproofing of electronic components, semiconductor materials, electronic appliances, etc. It is also used for water resistance, sealing, and potting of electric heaters, electronic instruments, and electronic components.

# RTV SILICONE SEALANT



## CLEAR (card) 35g

Viscosity: 3000-20000 cps

Tensile strength:  $\geq 9.0$

Temp range: -50-260(°C)

Shelf Life	Net Weight
------------	------------

12 Months	35G
-----------	-----

### Main advantages:

- After curing, it can provide protection and is not prone to fractures.
- It does not shrink or release toxic substances, ensuring safety and reliability.
- It has a wide range of applications and does not have any corrosive properties.

### Used in:

Widely used in bonding, sealing, and waterproofing of electronic components, semiconductor materials, electronic appliances, etc. It is also used for water resistance, sealing, and potting of electric heaters, electronic instruments, and electronic components.



## BLACK (box) 85g

Viscosity: 3000-20000 cps

Tensile strength:  $\geq 9.0$

Temp range: -50-260(°C)

Shelf Life	Net Weight
------------	------------

12 Months	85G
-----------	-----

### Main advantages:

- After curing, it can provide protection and is not prone to fractures.
- It does not shrink or release toxic substances, ensuring safety and reliability.
- It has a wide range of applications and does not have any corrosive properties.

### Used in:

Widely used in bonding, sealing, and waterproofing of electronic components, semiconductor materials, electronic appliances, etc. It is also used for water resistance, sealing, and potting of electric heaters, electronic instruments, and electronic components.



## GREY (box) 85g

Viscosity: 3000-20000 cps

Tensile strength:  $\geq 9.0$

Temp range: -50-260(°C)

Shelf Life	Net Weight
------------	------------

12 Months	85G
-----------	-----

### Main advantages:

- After curing, it can provide protection and is not prone to fractures.
- It does not shrink or release toxic substances, ensuring safety and reliability.
- It has a wide range of applications and does not have any corrosive properties.

### Used in:

Widely used in bonding, sealing, and waterproofing of electronic components, semiconductor materials, electronic appliances, etc. It is also used for water resistance, sealing, and potting of electric heaters, electronic instruments, and electronic components.



# AB EPOXY

AB epoxy is a two-component adhesive with one component being the base glue and the other component being the hardener. The two components need to be mixed together for the adhesive to cure. It is a type of room-temperature curing adhesive and does not require heat for curing, making it suitable for various modeling applications.

- It has a fast-drying characteristic. After mixing components A and B, it dries completely in 5 minutes at 25 degrees Celsius. The drying time becomes shorter as the temperature increases.
- It can bond plastic to plastic, plastic to metal, and metal to metal. Separation after bonding requires the use of a cutting tool or heat melting.



**METAL REPAIR EPOXY RESIN**

- High-Strength
- Resist Water

# A

**7707**

CONT.NET  
50G

**METAL REPAIR EPOXY RESIN**

- High-Strength
- Resist Water

# B

**7707**

CONT.NET  
50G

# AB EPOXY PRODUCT GUIDE



## Product Attributes

	Viscosity	Set Time	Cure Time	Temp Range
7705	5000-6000 cps	≤ 1h	≤ 24h	50-120(°C)
7701	6000-7000 cps	≤ 5min	≤ 24h	100-120(°C)
AB-20	3000-4000cps	≤ 5min	≤ 24h	-40-110(°C)
7707	700-800 cps	≤ 3h	≤ 24h	-60-100(°C)

## Product Advantages

Component A is acrylic-modified epoxy or epoxy resin, or contains catalysts and other additives. Component B is modified amine or other hardeners, or contains catalysts and other additives. They are mixed in a certain proportion. The catalyst can control the curing time, and other additives can control the performance (such as viscosity, hardness, flexibility, adhesion, etc.).



7705



7701



AB-20



7707



# AB EPOXY



**7705** 32g

**Viscosity:** 5000-6000 cps

**Attributes:** Epoxy AB glue

**Temp range:** 50-120(°C)

Shelf Life	Net Weight
24 Months	32G

#### Main advantages:

- It has the characteristic of deep curing.
- It has the characteristic of resistance to high and low temperature changes.
- After curing, the performance is safe, does not emit formaldehyde, and has high environmental performance.

#### Used in:

It has a wide range of applications and can be used in various industries such as new energy, military, medical, aviation, marine, electronics, automotive, instruments, power, and high-speed rail.



**7701** 40ml

**Viscosity:** 6000-7000 cps

**Attributes:** Epoxy AB glue

**Temp range:** 100-120(°C)

Shelf Life	Volume
24 Months	40ml

#### Main advantages:

- Convenient to use, even dispensing.
- Features resistance to high and low temperature changes.
- High viscosity, impact resistance, weather resistance, and moisture resistance.

#### Used in:

Widely used in vehicle, machinery, chemical pipelines and storage tanks, furniture industry, lighting fixtures, toys, ceramics, daily necessities, handicrafts, and other adhesive manufacturing and repair applications.



**AB-20** 20ml\*6

**Viscosity:** 3000-8000 cps

**Attributes:** Acrylic AB glue

**Temp range:** -40-110(°C)

Shelf Life	Volume
24 Months	20ML*6

#### Main advantages:

- Excellent workability.
- Fast cure at room temperature.
- Strong impact resistance, good high-temperature resistance, and water resistance.

#### Used in:

Used for resin crafts, Christmas gifts, plastic toys, ceramic crafts, furniture, iron, stainless steel, wood bonding, artificial stone, and other bonding applications.

# AB EPOXY



7707

100g

**Viscosity:** 700-800 cps

**Attributes:** AB glue

**Temp range:** -60-100(°C)

Shelf Life	Net Weight
24 Months	100G

#### Main advantages:

- Good toughness, oil resistance, and water resistance.
- It can withstand high and low temperatures, humidity, and atmospheric aging.
- The cured material has good insulation, compression resistance, and low shrinkage.

#### Used in:

AB glue is widely used for bonding various metal and non-metal materials, including steel, aluminum, ceramics, plastics, etc. It is also used for preparing polyamide anticorrosive coatings, bonding glass, casting electrical appliances, and sealing electronic components, among other applications.



# TIRE GLUE

Tire glue is a single component silane modified sealant based on MS polymer with excellent bonding properties. It gradually forms an elastomer by reacting with moisture in the air or substrate, and belongs to the wet gas consolidation type.

- Good adhesion, good adhesion to car tires.
- Solvent-free, extremely low VOC, healthy and environmentally friendly, non-toxic, odorless, non-corrosive substrate.
- Good weather resistance, long service life, can resist a variety of natural environment.
- Single component, high strength, easy to use.



# TIRE GLUE PRODUCT GUIDE



## Product Attributes

	Strength	Viscosity	Cure Time	Dry Color	Temp Range	Shelf Life
9207	>15mpa	100-200cps	≤24h	Black	-30~115C(°C)	≤12 months
9209	1.8 mpa	12000cps	≤24h	Black	>20(°C)	≤9 months

## Product Advantages

Tire glue is a silane modified sealant, which is a single component sealant based on MS polymer, and has excellent adhesion. It depends on the contact with the air or the moisture in the substrate to gradually form an elastic body, which belongs to the wet gas consolidation type.



9207



9209

# TIRE GLUE



9207

20g

**Viscosity:** 100-200cps

**Appearance:** Black liquid

**Feature:** Toughened type, aging resistance, moisture and heat resistance.

Shelf Life	Net Weight
12 Months	20G

**Main advantages:**

- Toughened type
- Aging resistance
- Resistance to humidity and heat

**Used in:**

Metal, plastic, rubber, magnetic materials.



9209

50ml

**Viscosity:** 12000cps

**Appearance:** Uniform black paste

**Feature:** low VOC, healthy and environmentally friendly.

Shelf Life	Volume
9 Months	50ML

**Main advantages:**

- Good adhesion, good adhesion to car tires.
- Single component, high strength, easy to use
- Good weather resistance, long service life, can resist a variety of natural environment.

**Used in:**

The surface should be polished before use, used once after opening or tightly stored, and the cured part should be squeezed out when used again.

# SURFACE TREATING AGENT



Surface treatment products are used to ensure that OKEBOND adhesives and sealants perform optimally. OKEBOND activator is used to increase the curing speed and gap-filling ability of the adhesive. The primer is specifically designed for structural adhesives and ensures better adhesion between the adhesive and the substrate on non-active surfaces, accelerating the curing process.

- Cleaning and degreasing of work platforms and workpieces.
- Cleaning of residual adhesives for electronic components.
- Efficient, gentle, and biodegradable cleaning products.
- Component cleaning before using OKEBOND adhesives/sealants.



# SURFACE TREATING AGENT PRODUCT GUIDE



## Product Attributes

## Product Advantages

	Viscosity	Handle Time	Volatile Time	Color
OK 755	<5 cps	≤ 30s	≤ 30s	Yellow to amber transparent
OK 7649	<5 cps	—	—	Green
OK 770	<5 cps	≤ 1h	≤ 20s	Clear
OK 7452	<5 cps	≤ 20-40s	≤ 20s	Clear

OKEBOND surface treatment agent provides excellent results. When choosing a surface treatment agent, the main factors to consider include evaporation time, residue, odor, and substrate compatibility. Residue is particularly important, as it may impact subsequent processes such as painting or bonding. Substrate compatibility is also a crucial consideration.



OK 755



OK 7649



OK 770



OK 7452

# SURFACE TREATING AGENT



**OK 755** 450ml

**Viscosity:** Extremely low

**Color:** Yellow to amber transparent liquid.

**Purpose:** Universal cleaning agent

Shelf Life	Volume
12 Months	450ML

#### Main advantages:

- Fast evaporating.
- Cleans surface oil on electrical components.

#### Used in:

Suitable for removing dirt, resin, metal shavings, paint, oil, and grease from parts.



**OK 7649** 50ml

**Viscosity:** Extremely low

**Color:** Colorless and transparent

**Purpose:** Activator, used in combination with  
OKEBOND anaerobic adhesive.

Shelf Life	Volume
12 Months	50ML/100ML

#### Main advantages:

- Accelerate the curing speed of anaerobic adhesive.
- Promote the curing of anaerobic adhesive.
- Improve the bonding strength between large gaps of substrates.

#### Used in:

Specific surface conditions must be considered, including roughness, smoothness, porosity, presence or absence of coatings, cleanliness, flexibility, part size, and surface energy.



**OK 770** 50ml

**Viscosity:** Extremely low

**Color:** Colorless and transparent liquid.

**Purpose:** Processing agent, used in combination with OKEBOND instant adhesive.

Shelf Life	Volume
12 Months	50ML

#### Main advantages:

- Promote curing, increase surface energy.
- Effectively enhance the adhesion of low-surface-energy materials.
- Improve the bonding strength of instant adhesives.

#### Used in:

I would recommend using it for challenging-to-bond plastics, including silicone, polyethylene, polypropylene, polytetrafluoroethylene (PTFE), and thermoplastic rubber materials.



# SURFACE TREATING AGENT



**OK 7452** 50ml

**Viscosity:** Extremely low

**Color:** Colorless transparent to slightly amber liquid.

**Purpose:** Catalyst, used in combination with OKEBOND instant adhesive.

Shelf Life	Volume
12 Months	50ML

#### Main advantages:

- Avoid whitening.
- Accelerate curing.
- Increase the curing speed of instant adhesive.

#### Used in:

It can increase the curing time and curing speed, with the specific improvement value depending on the adhesive used and the substrate being bonded.



# JUJU

## ZHEJIANG JIUERJIU CHEMICALS CO., LTD.

FOR MORE INFORMATION, PLEASE CONTACT US

📍 No. 729 Fengming Road, Zhenhai, Ningbo, 315200, China

☎ +86-574-86502929

✉ info@jujuchem.com

🌐 www.jujuchem.com

